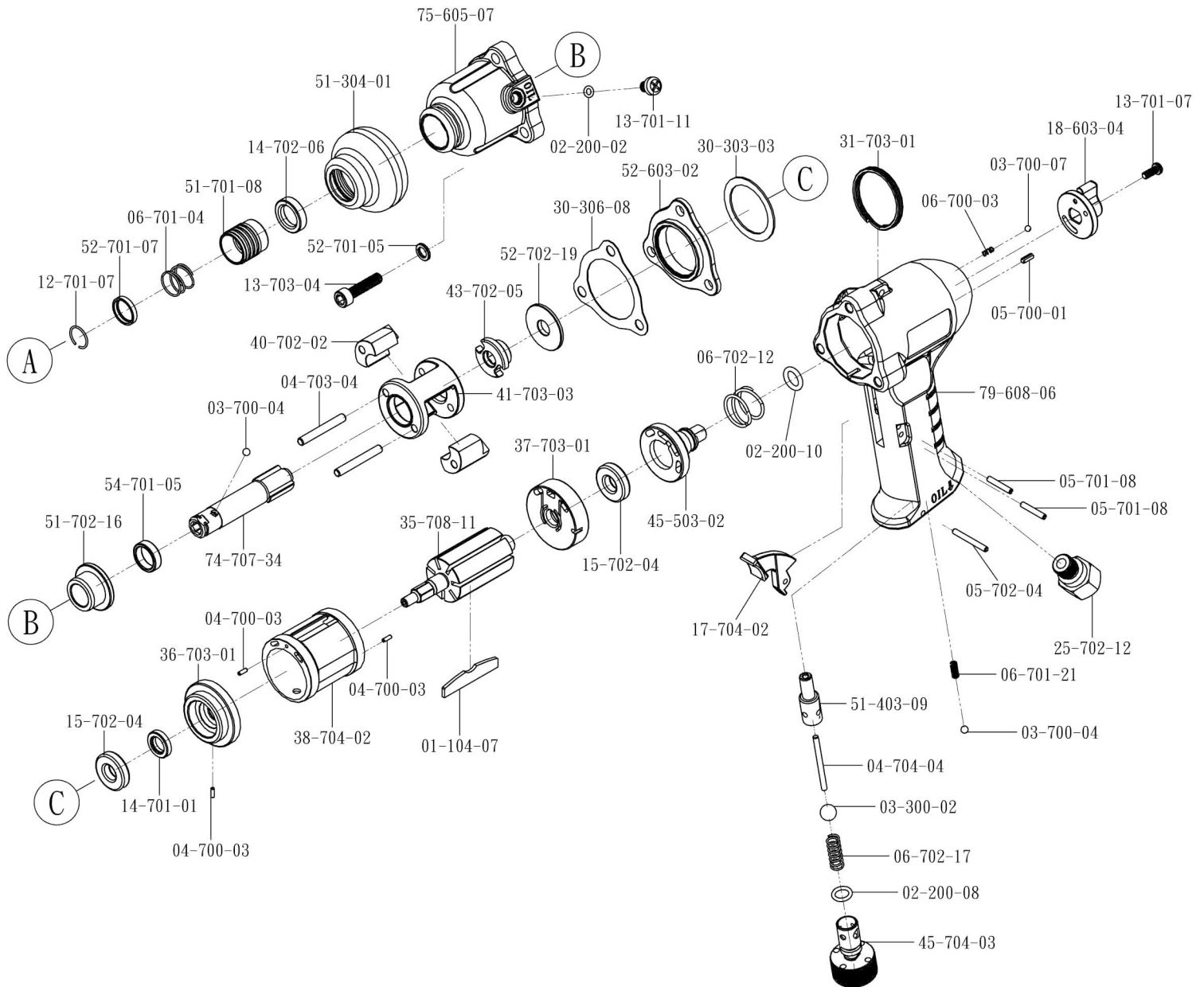


# GLS-310LA Two Hammer Impact Screw Driver



Part No.	Description	Q' ty	Part No.	Description	Q' ty	Part No.	Description	Q' ty
01-104-07	ROTOR BLADE	7	12-701-07	RETAINING RING	1	41-703-03	HAMMER CASE	1
02-200-02	O-RING (S4)	1	13-701-07	SCREW	1	43-702-05	HAMMER CAM	1
02-200-08	O-RING (P8)	1	13-701-11	SCREW	1	45-503-02	ADJUSTER	1
02-200-10	O-RING (P9, 2x2.5)	1	13-703-04	SCREW	3	45-704-03	SPEED SWITCH	1
03-300-02	PLASTIC BALL (φ 9)	1	14-701-01	OIL SEAL	1	51-304-01	BUSHING	1
03-700-04	STEEL BALL (φ 4mm)	2	14-702-06	OIL SEAL	1	51-403-09	BUSHING	1
03-700-07	STEEL BALL (φ 3.175mm)	1	15-702-04	BALL BEARING (R6)	2	51-701-08	BUSHING	1
04-700-03	PIN (φ 2x6)	3	17-704-02	SWITCH LEVER	1	51-702-16	BUSHING	1
04-703-04	PIN (φ 4.5x34)	2	18-603-04	REVERSE VALVE	1	52-603-02	WASHER	1
04-704-04	PIN (φ 3x40)	1	25-702-12	AIR INLET (PT)	1	52-701-05	WASHER	3
05-700-01	PIN (φ 3x8)	1	30-303-03	PACKING	1	52-701-07	WASHER	1
05-701-08	PIN (φ 3x18)	2	30-306-08	PACKING	1	52-702-19	WASHER	1
05-702-04	PIN (φ 3x26)	1	31-703-01	HOOK	1	54-701-05	RING	1
06-700-03	SPRING	1	35-708-11	ROTOR	1	74-707-34	ANVIL	1
06-701-04	SPRING	1	36-703-01	FRONT PLATE	1	75-605-07	FRONT CAP	1
06-701-21	SPRING	1	37-703-01	REAR PLATE	1	79-608-05	HANDLE	1
06-702-12	SPRING	1	38-704-02	CYLINDER	1			
06-702-17	SPRING	1	40-702-02	HAMMER	2			

Model	Screw Size Capacity (mm)	Free Speed (rpm)	Working Torque (Nm)	Overall Length (mm)	Weight (kg)	Air Inlet Size	Air Pressure (psi)
310LA	6~8	7700	60	195	1.38	1/4"	90