

High quality cutting tools and machinery

FOAM RUBBER CUTTER



Features

- Heavy duty replaceable blade for accurate and fine cutting
- Low-vibration and low-noise running due to reciprocating saw blades
- Ideal for soft-medium foam - polyurethane, polyethylene, EVA & rubber
- Adjustable speed setting control allows you to fine tune cut for different density grades
- Cuts sharp turns and varying shapes with ease. Easily cut out "T" and "L" shaped cushions
- Detachable base with glide rollers

Specifications

Rated power input: 240V (Australian Plug)
No-load stroke rate: 0-3200 spm
Power output: 570W
Weight: 2.3 kg
Variable Speed: Yes
Cutting depth: 200mm (8")

This professional multi-purpose foam rubber cutter can cut all sorts of foam grades and densities up to 200mm (8") thick. It has two heavy duty 2 blades, one which stays stationary and one which moves up and down. Blades have small teeth (10 teeth per inch) to produce a fine reliable cut every time. Dual blades create less tension so that not as much stress is put on the motor. An economical option for cutting foam easily and effortlessly.

WARNING

Always follow basic safety instructions when using the tool. Failure to follow all instructions listed below may result in electric shock, fire and/or serious personal injury. The manufacturer will not accept any responsibility for damage caused by improper use of the tool.

- The supply voltage must correspond to the voltage shown on the tool
- Avoid body contact with grounded or earth surfaces (such as pipes, radiators, ranges refrigerators).
- Use only one extension cable of the prescribed size, with safety markings.
- Cable, plug, extension cable and socket must be kept in perfect condition: avoid damaging them when working. Do not use if some parts are damaged.
- Keep cable away from heat, oil and sharp edges.
- Use and store the tool in a safe dry place, away from children, water, dangerous liquids or gases.
- Always disconnect the tool from the power supply after use.
- Do not exceed the maximum average run time. If cutter overheats, leave it to cool down.
- Keep the work area clear. Disorder is a potential cause of accidents.
- Pay attention and watch what you are doing. Use common sense to avoid unsafe situations, unbalanced positions, particularly when you are tired.
- Do not disassemble or alter the housing of the cutter. All repairs must be performed by specialised personal only.

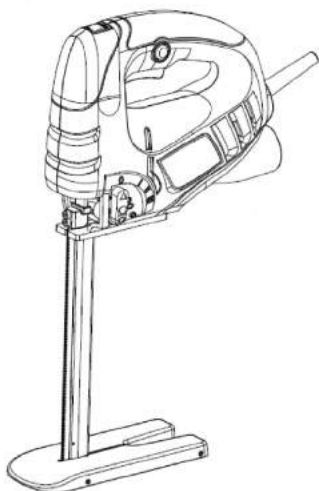
BLADE SHARPNESS

Over time the blades will wear out and become less effective and need to be replaced. The reciprocating (moving) blade is recommended to be changed more frequently than the stationary blade which is fixed to the guide and base plate. Depending on usage and material these blades have varying life expectancy and should be changed immediately after cutting becomes more labouring. These blades like other spare parts can be purchased separately from your nearest stockist.

LUBRICATION

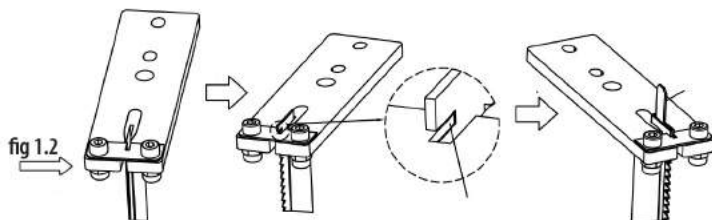
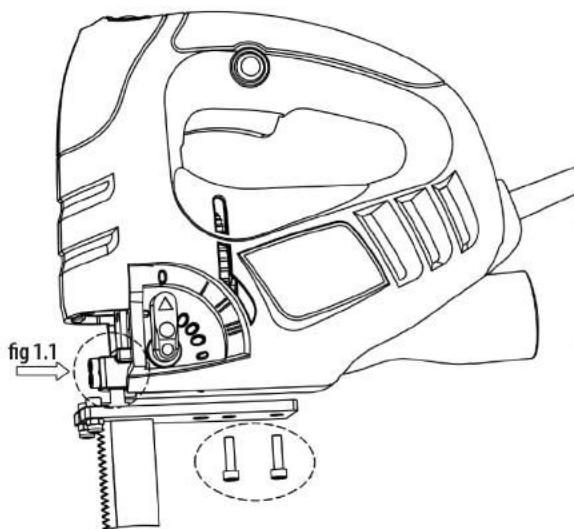
The moving blade should be occasionally lubricated with any lubricating oil. The purpose of the lubrication is to reduce heat and friction on both sides of the moving blade. Failure to do this will result in excess stress on the motor and shorten its useful life.

1. Stop the motor with the moving blade in the up position exposing about 12mm of the blade at the top of its enclosure of blade guide.
2. Apply the lubricant to both sides of the moving blade at the top of the blade below the blade clamp.
3. The up and down motion of the moving blade will draw the oil down into the blade guide on either side of the blade. The exterior of the blade guide should be sprayed frequently with a silicone spray. The purpose of the silicone spray is to enable the foam to slip more easily past the blade guide and is recommended before every use.



REMOVING/REPLACING BLADE

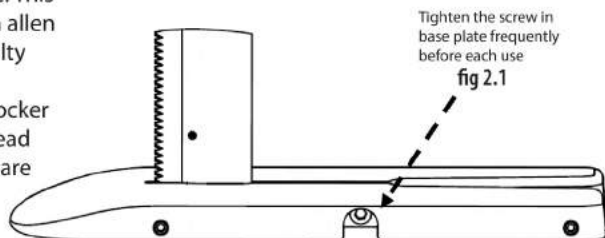
1. Whilst machine is turned off and completely unplugged, unscrew 2x black allen screws located in silver box on front of main body (fig 1.1) until loose with allen key provided (do not completely remove).
2. Remove one of the two set screws at top of the blade unit (fig 1.2). Open the gate to one side so that you can release the moving or fixed blade downwards and pulling outwards releasing the blades from the internal pin at bottom of guide.
3. When replacing blades ensure the moving blade is on the right hand side of the fixed blade (when looking at the unit directly from the front). Slide both blades into the guide back over internal pin at bottom near base plate.
4. Slide top of moving blade into silver box on front of main body (fig 1.1). Tighten allen screws securely and then slide gate back into position and replace set screw.



BASE PLATE

The base plate is attached by one high strength allen screw (fig 2.1), which should be kept tight at all times to prevent breakage. This should be tightened before each use with allen key provided. If you are having any difficulty keeping this screw tight, you should immediately use a type of Loctite threadlocker to prevent the release or loosening of thread joints (available through your local hardware store).

If you wish to remove base plate to operate foam cutter to chamfer or cut angled edges more easily, simply remove screw from base plate and place both feet over either side of plate whilst on the ground. Gently wiggle foam body until it comes apart from base plate.



For any further technical information regarding products, please refer to website or your nearest stockist.

READ CAREFULLY BEFORE USING THE TOOL

If warranty terms are not acceptable, return unused in saleable condition for refund/credit.

LIMITED WARRANTY

WHAT IS COVERED: this warranty covers any defects in material and workmanship.

HOW LONG: the duration of this warranty is of 6 months from date of purchase.

WHAT MANUFACTURER WILL DO: during this period, replacements or repairs of tool (at manufacturer's option) will be made without any cost for parts or labour by an authorised manufacturer service centre.

WHAT IS NOT COVERED: this warranty does not cover damage by accident, general wear & tear, misuse, unauthorized repair or modification, or due to the use of cutting materials not recommended by the manufacturer or which do not comply with the manufacturer quality control specification and/or product performance standards.

HOW TO GET SERVICE: to obtain repair or replacement under this warranty, the tool must be returned to the place of purchase or an authorized manufacturer service centre, AT YOUR EXPENSE, with original purchase receipt, or other positive proof of purchase.

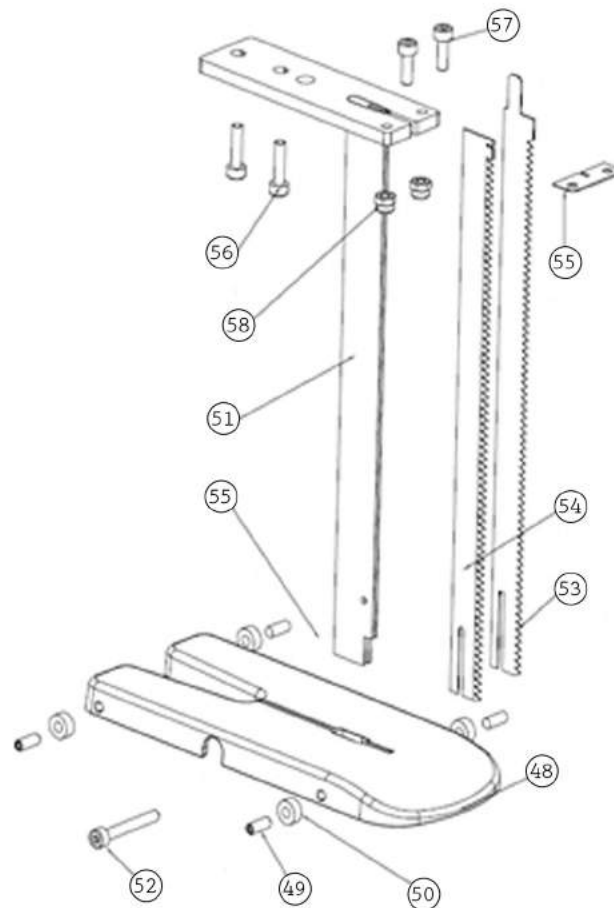
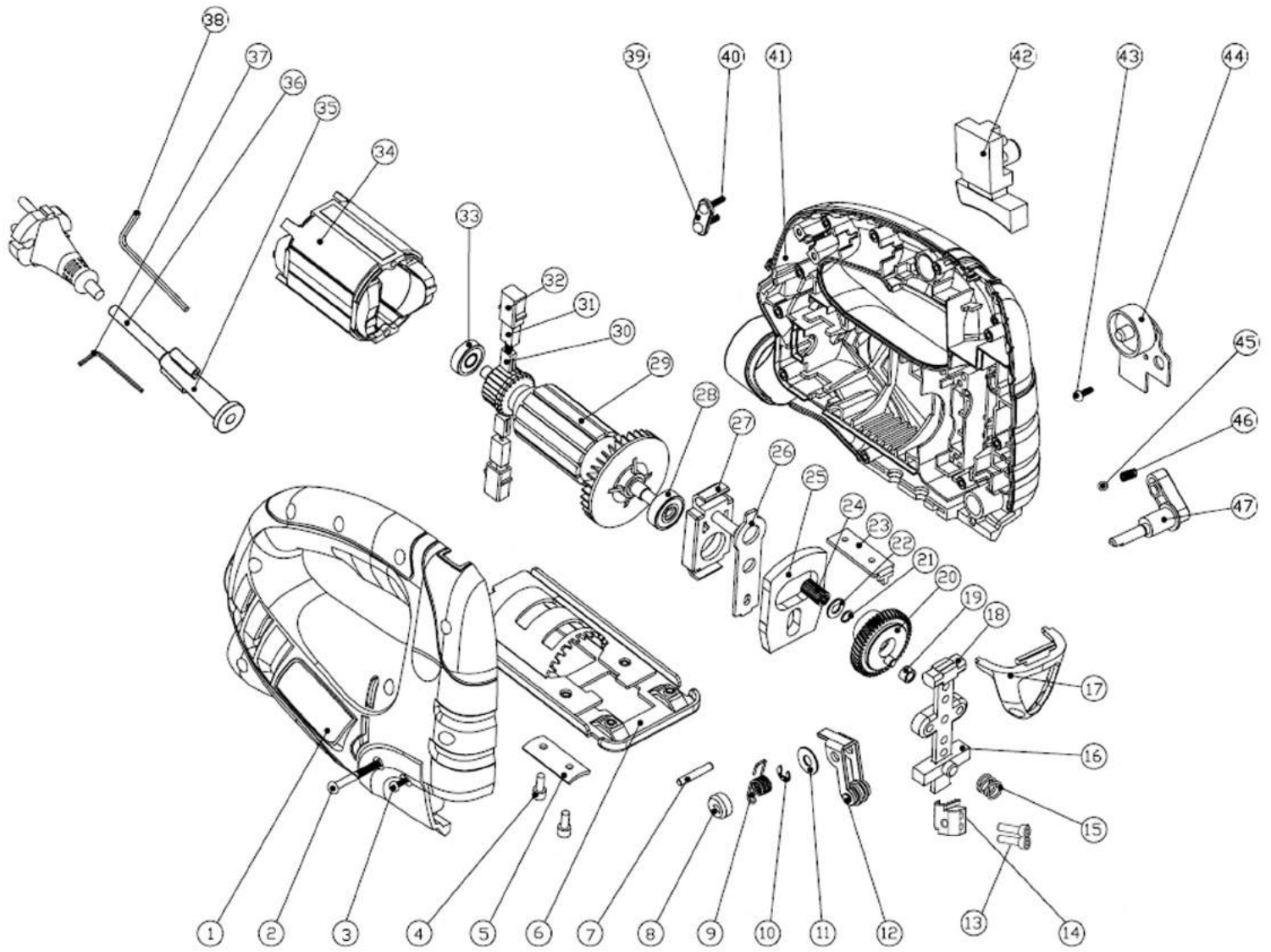
THIS WARRANTY IS IN LIEU OF ANY OTHER WARRANTIES. THESE, WHETHER ORAL, WRITTEN, EXPRESS, OR IMPLIED, INCLUDING, BUT NOT LIMITED TO, ANY IMPLIED WARRANTY OF MERCHANTABILITY OR FITNESS FOR A PARTICULAR PURPOSE SHALL NOT APPLY TO THE WARRANTIES EXTENDED WITH THIS TOOL.

Any representations or promises inconsistent with or in addition to this warranty are unauthorised and shall not be binding upon the manufacturer.

IN NO EVENT, WHETHER AS A RESULT OF BREACH OF CONTRACT, WARRANTY, TORT (INCLUDING NEGLIGENCE) OR OTHERWISE, SHALL MANUFACTURER'S LIABILITY TO THE PURCHASER OF THIS TOOL OR ANY LOSS OR DAMAGE ARISING OUT OF THE BREACH OF WARRANTY, CONTRACT, OR TORT, EXCEED THE PRICE OF THE TOOL WHICH HAS GIVEN RISE TO THE CLAIM OR LIABILITY.

Register your product online at: **www.rapid-cut.com.au/warranty-registration**

FOAM RUBBER CUTTER - RC01 V2 - EXPLODED VIEW & PARTS LIST



FOAM RUBBER CUTTER - RC01 V2 - EXPLODED VIEW & PARTS LIST

Position	Part Number	Part Name	QTY
1	300161	Right Enclosure	1
2	500210	Tapping Screw ST3.9x45	2
3	500200	Tapping Screw ST3.9x19	7
4	501507	Adjusting Screw M4x14	2
5	224337	Fixing Plate	1
6	145002	Iron Base Plate	1
7	215023	Saw Holder Pin	1
8	204003	Metal Pendulum Switch	1
9	241512	Roller Spring	1
10	511000	Fixing Spring	1
11	503000	Washer	1
12	143610	Blade Support Assn	1
13	2001552	Allen Screw M4x12	2
14	143603	Blade Holder Assn	1
15	241510	Spring	1
16	203008	Holder For Saw Arm	1
17	312259	Finger Guard	1
18	203051	Holder For Saw Arm	1
19	204004	Roller	1
20	214308	Big Gearing	1
21	511000	Fixing Spring	1
22	503000	Washer	1
23	224339	Connecting Plate	1
24	522000	Needle Roller Bearing	2
25	203015	Balance Block	1
26	224352	Lifting Knife Plate	1
27	147503	Bearing Holder	1
28	520013	Bearing	1
29	100125	Rotor	1
30	162400	Carbon Brush	2
31	222800	Brush Holder	2
32	314500	Brush Bushing	2
33	520012	Bearing	1
34	110125	Stator	1
35	322002	Cord Sleeve	1
36	160202	AC-Cord & Plug	1
37	660007	Allen Hex Key s=2.5	1
38	660010	Allen Hex Key s=3	1
39	224200	Strain Relief	1
40	500201	Tapping Screw ST3.9x14	3
41	300161	Left Enclosure	1
42	163618	Switch	1
43	500000	Tapping Screw ST2.9x9	1
44	162917	PCB	1
45	516003	Metal Ball	1
46	241511	Spring	1
47	155524	Pendulum Switch	1
48	2002463	Base Plate	1
49	2001828	Headless Screw M4x12	4
50	2001810	Bearing 9x4x4	4
51	2002842	Mounting Plate & Column (8")	1
52	2000378	Allen Screw M4x25	1
53	2002848	Moving Saw Blade	1
54	2002849	Fixed Saw Blade	1
55	2002852	Saw Blade Baffle Gate	1
56	2001553	Allen Screw M4x16	2
57	2000012	Inner Hex Screw M4x10	2
58	2000353	Locknut M4	2